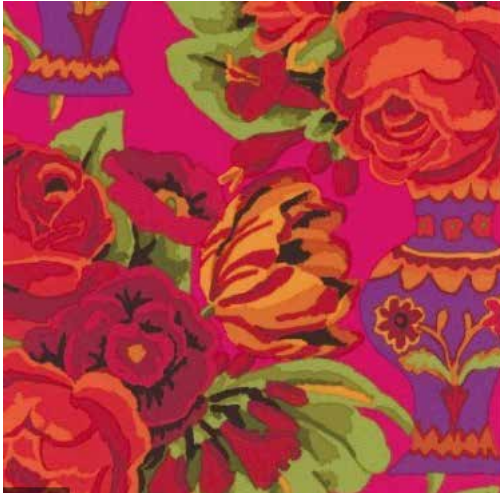


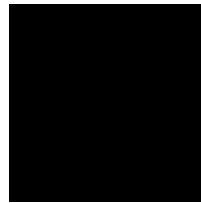
Block of the Month September 2020

Easy to make

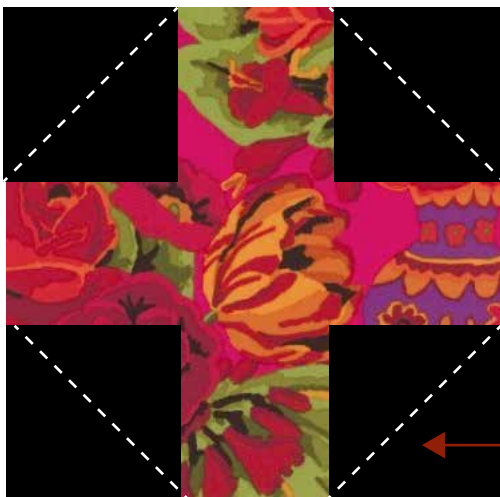


Cut 1 x 9¹/₂ inch square out of floral fabric - Kaffe if you have it

Cut 4 x 3¹/₂ inch squares from Black fabric



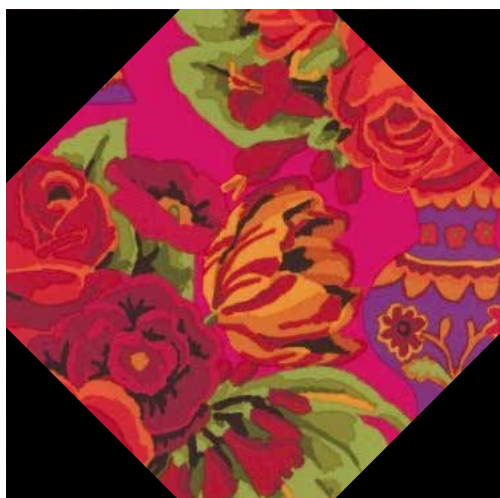
note:
not to scale



Lay the 4 black squares on the 4 corners.

Sew across the 4 corners diagonally

sew along lines



Press the flaps to the outside

Trim off excess fabric

the blocks will look something like this when put together

